

SPACE FOR LEASE

2613 EAST 16TH STREET

SHEEPSHEAD BAY | BROOKLYN, NY



COMMERCIAL
ACQUISITIONS
REALTY SERVICES



COMMERCIAL
ACQUISITIONS

FOR MORE INFORMATION ON THIS PROPERTY PLEASE VISIT: COMMERCIALACQ.COM



SPACE DETAILS

LOCATION INFO

Between Ave Z & Sheepshead Bay Rd

SIZE

4th FL - 2,850 SF

ZONING

C4-2

PRICE

Upon Request

NEIGHBORHOOD

Sheepshead Bay

FRONTAGE

30 FT

COMMENTS

- Class-A Elevator Building
- Steps From All Public Transportation
- Build To Suit Available
- Office Suitable for Any Medical or Professional Use

TRANSPORTATION



ANNUAL RIDERSHIP

5,183,545



FOR MORE INFORMATION ON THIS PROPERTY PLEASE VISIT: COMMERCIALACQ.COM



2613 EAST 16TH STREET FOR LEASE



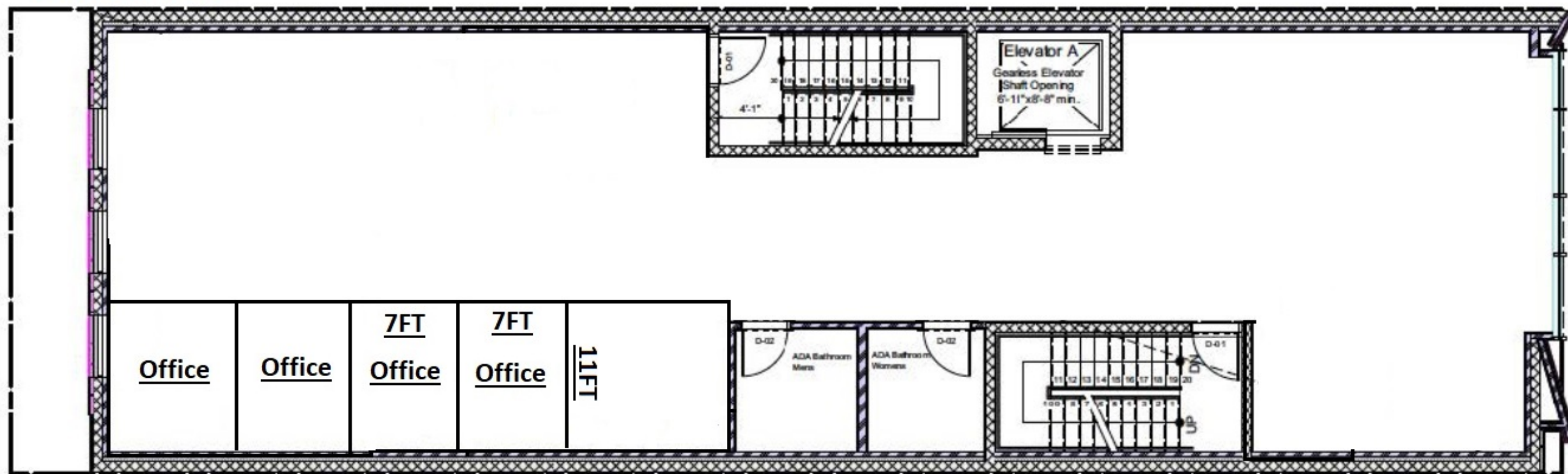
COMMERCIAL
ACQUISITIONS

FOR MORE INFORMATION ON THIS PROPERTY PLEASE VISIT: COMMERCIALACQ.COM



2613 EAST 16TH STREET FLOOR PLAN

4TH FLOOR



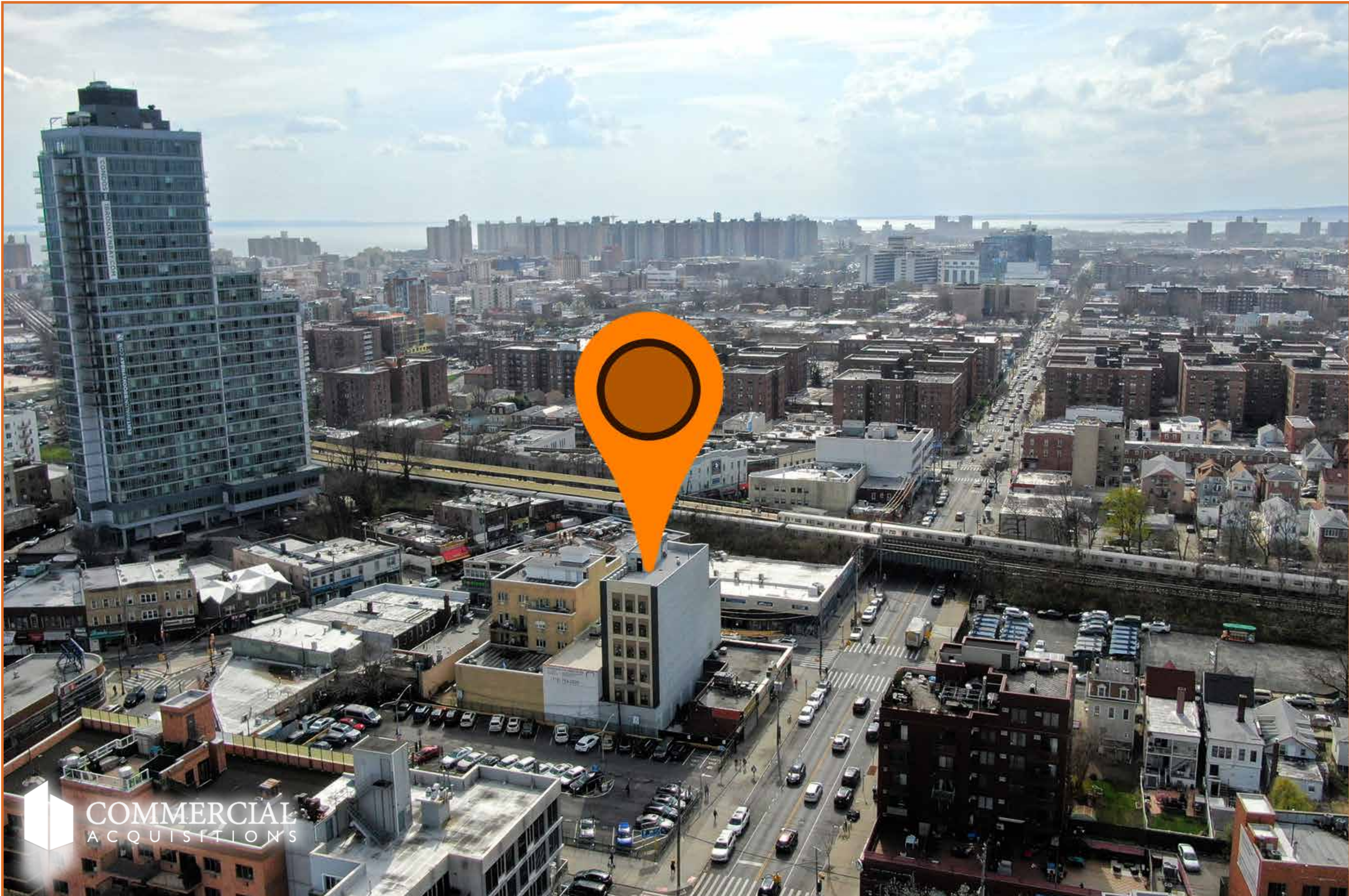
2613 EAST 16TH STREET FOR LEASE



FOR MORE INFORMATION ON THIS PROPERTY PLEASE VISIT: COMMERCIALACQ.COM



**FOR MORE INFORMATION,
CONTACT EXCLUSIVE BROKER
DENIS ABAYEV
Denis@CommercialACQ.Com
718.954.1363**



FOR MORE INFORMATION ON THIS PROPERTY PLEASE CALL OUR OFFICE: 718.517.8700

2500 CONEY ISLAND AVENUE, 2ND FLOOR, BROOKLYN, NY 11223 | 📞 718.513.1889 | ✉️ DENIS@COMMERCIALACQ.COM | COMMERCIALACQ.COM

Commercial Acquisitions Inc. has made every effort to obtain the information regarding these listings from sources deemed reliable. However, we cannot warrant the complete accuracy thereof subject to errors, omissions, change of price, rental or other conditions, prior sale, lease or financing, or withdrawal without notice. We recommend to the buyer that any information, which is of special interest, should be obtained through independent verification. ALL MEASUREMENTS MAY BE APPROXIMATE.